

# PRODUCT LINE CARD - NORTHERN CALIFORNIA

## SACRAMENTO S.

8120 Power Ridge Road, Sacramento, CA 95826  
**P:** (916) 381-4242 | **P:** (800) 952-8614  
**F:** (916) 381-2834  
**E:** sacramentosales@woodgrain.com

## SACRAMENTO N.

201 Opportunity Street, Sacramento, CA 95838  
**P:** (916) 561-2860 | **P:** (800) 888-1213  
**F:** (916) 561-2861  
**E:** sac@woodgrain.com

## SONOMA

221 Fremont Drive, Sonoma, CA 95476  
**P:** (707) 938-1050  
**F:** (707) 938-5825  
**E:** sonomaallusers@woodgrain.com

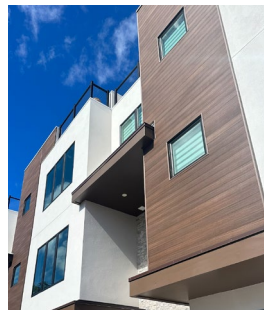
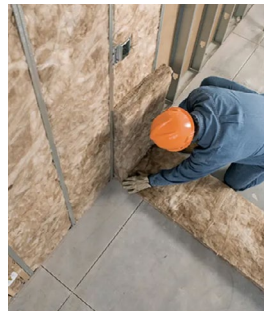
## NOVATO

10 Grandview Drive, Novato, CA 94945  
**P:** (415) 898-6366  
**F:** (415) 898-5866  
**E:** novatoallusers@woodgrain.com



## BRANDS WE CARRY

<b>A</b> Advantage Plus Advantage Plus - <i>FLAMEfixx</i> Amerimax Home Products Art's Sheet Metal Mfg.	<b>I</b> ITW	<b>S</b> Sika Stockton Products
<b>B</b> Backer-On	<b>J</b> JD Russell	<b>T</b> Tapcon Teks Tiger Claw Titebond Tree Island Trimaco TrueSpec
<b>C</b> Cedar Mountain Shims	<b>K</b> Kelleher Classic Kelleher Mouldings K-Lath Knauf Insulation	<b>U</b> United States Gypsum
<b>D</b> D-Stake Mill Deck2wall Decor Mfg. Durock	<b>L</b> Loctite Adhesives	<b>V</b> Vulcan Vent
<b>F</b> FastenMaster FT Synthetics	<b>M</b> Maurice Franklin Louver Co. Maze Nails MFM Building Products	<b>W</b> Woodway Woodgrain: Millwork Woodgrain: Molded & Flush Woodgrain: Stile & Rail
<b>G</b> GMC Roofing Green Products Company GRK Fasteners	<b>N</b> NewTechWood	
<b>H</b> Halsteel Hanes Geo Components Huttig-Grip Huttig-Guard Huttig-Spin	<b>O</b> OSI Sealants	
	<b>P</b> Phillips Manufacturing PlastPro	
	<b>R</b> Ramset Red Head Revolution Rogue Valley Door	



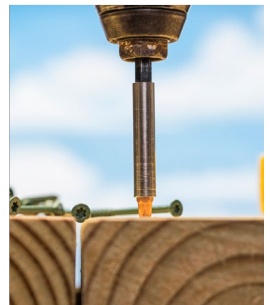
*\*All brands and products shown are sold by Woodgrain/Kelleher in the NorCal market. Stocking mix will vary by location. Contact your sales rep for more information.*

## CALL YOUR REPRESENTATIVE TODAY!

EMAIL: \_\_\_\_\_

PHONE: \_\_\_\_\_

SALES CONTACT: \_\_\_\_\_



# PRODUCTS WE OFFER - NORTHERN CALIFORNIA

## /// DOORS

### Exterior Doors

- Stile & Rail
- Fiberglass
- Folding Patio

### Interior Doors

- Hollow Core
- Solid Core
- Molded

- Flush
- Stile & Rail
- Primed Shaker
- Vertical Grain Douglas Fir Shaker

- Fire Rated
- Bifolds

## /// BUILDING PRODUCTS

### Boards & Dimensional Lumber

- Vertical Grain Douglas Fir
- S4S Hardwood Boards
- C & Better Pine
- #2 Premium Pine
- Furring Strips

### Building Materials

- Adhesives & Sealants
- Caulks
- Composite Panel - Cement
- Floor Protection
- Polyethylene Sheeting
- Stucco Netting
- Wood Shims
- Green's Wood Preservatives

### Concrete Products

- Bearing Plates
- Dobies
- Expansion Joint
- Foundation Bolts
- Mesh
- Rebar Caps
- Steel Stakes
- Wood Stakes
- Threaded Rod

### Decking

- Composite Decking
- Post Caps

### Dry Wall

- Corner Bead
- Joint Cement
- Tape

### Erosion Control

- Straw Wattle
- Wattle Stakes

### Fencing

- Cedar Fencing
- Redwood Lattice
- Safety Fencing

### Flashing

- Flexible
- Metal - Z Bar
- Metal - Rolled
- Window and door

### Housewrap

- Commercial
- Flashings
- Residential
- Tapes

### Insulation

- Fiberglass
- Sill Seal
- Netting

### Landscaping Items

- Fabric
- Wood Stakes

### Plywood

- ACX Plywood
- Hardwood Plywood

### Roofing

- Felt - Asphalt & Synthetic
- Flashing
- Leak Barriers

### Siding

- Composite Cladding
- Architectural Siding Systems
- Treated Primed Pine Siding & S1S2E Boards
- Fire-Resistant Treated Primed Pine Siding & S1S2E Boards
- Primed Cedar Siding & S1S2E Boards

### Specialty Wood Products

- Douglas Fir T&G Flooring
- 2x2 S4S Redwood – CAH / Hrt B
- 1x1x8 Redwood – CAH / Sel Hrt (Rough)

### Ventilation

- Fire Vents
- Metal Vents
- Mini Vents

### Weatherstrip

## /// MILLWORK

### Moulding

- Solid Pine
- Fingerjoint Primed Pine
- Flexible
- Premium Primed Pine
- MDF
- Douglas Fir
- Oak
- Poplar
- Superior Alder
- Knotty Alder
- Exterior
- Hardwood

### Exterior Frames

- Fingerjoint Primed Pine
- Solid Pine
- Vertical Grain Douglas Fir
- Treated Primed Pine
- Knotty Alder
- Superior Alder
- Oak
- Poplar

### Interior Jamb

- Fingerjoint Primed Pine
- Solid Pine
- Vertical Grain Douglas Fir
- Knotty Alder
- Superior Alder
- Oak
- Poplar
- MDF

### Wall Panels

## /// FASTENERS

- Hidden Deck Fasteners
- Nails - Bulk
- Nails - Collated
- Nails - Packaged
- Screws
- Specialty Screws
- Staples
- Threaded Rod

